



## **Behavioral Health and Recovery Services Alcohol and Drug 5-Year Prevention Plan Problem Identification**

### **Our Vision**

Our vision is to continue to be a leader in behavioral health and to be recognized for excellence in our community, state, and nation.

### **Our Mission**

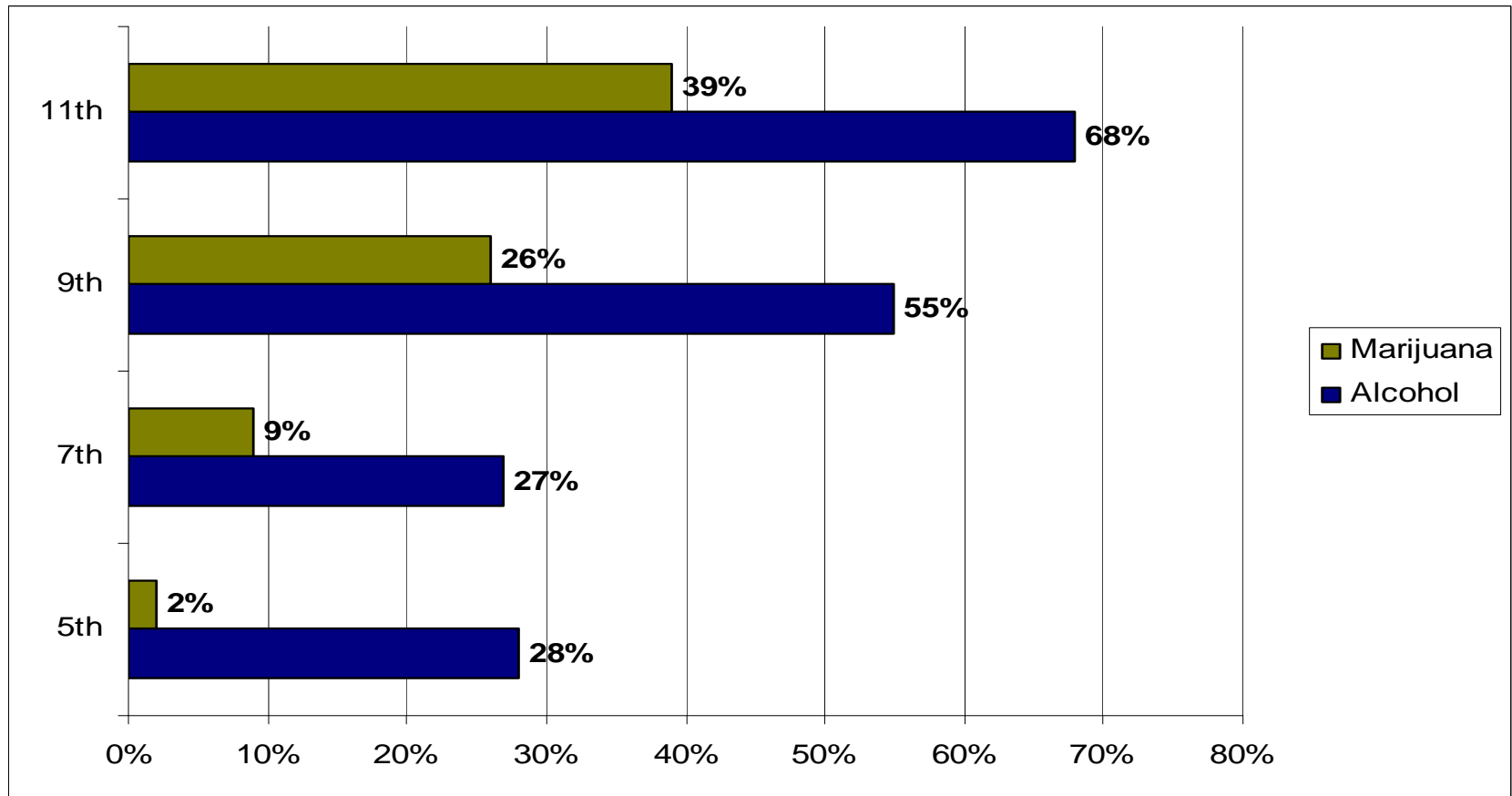
In partnership with our community, our mission is to provide and manage effective prevention and behavioral health services that promote the community's capacity to achieve wellness, resilience, and recovery outcomes.

## The Problems

- 1. Too Many Youth Are Drinking Alcohol**
- 2. Too Many People Are Using Methamphetamine**
- 3. Too Many Drug-Related Deaths**
- 4. Too Many People are driving under the influence**
- 5. Too little is known about older adult (60 years +) substance use and abuse in Stanislaus County**

# Too Many Youth Are Drinking Alcohol

## *Percent of Students That Used Alcohol and Marijuana in Their Lifetime*

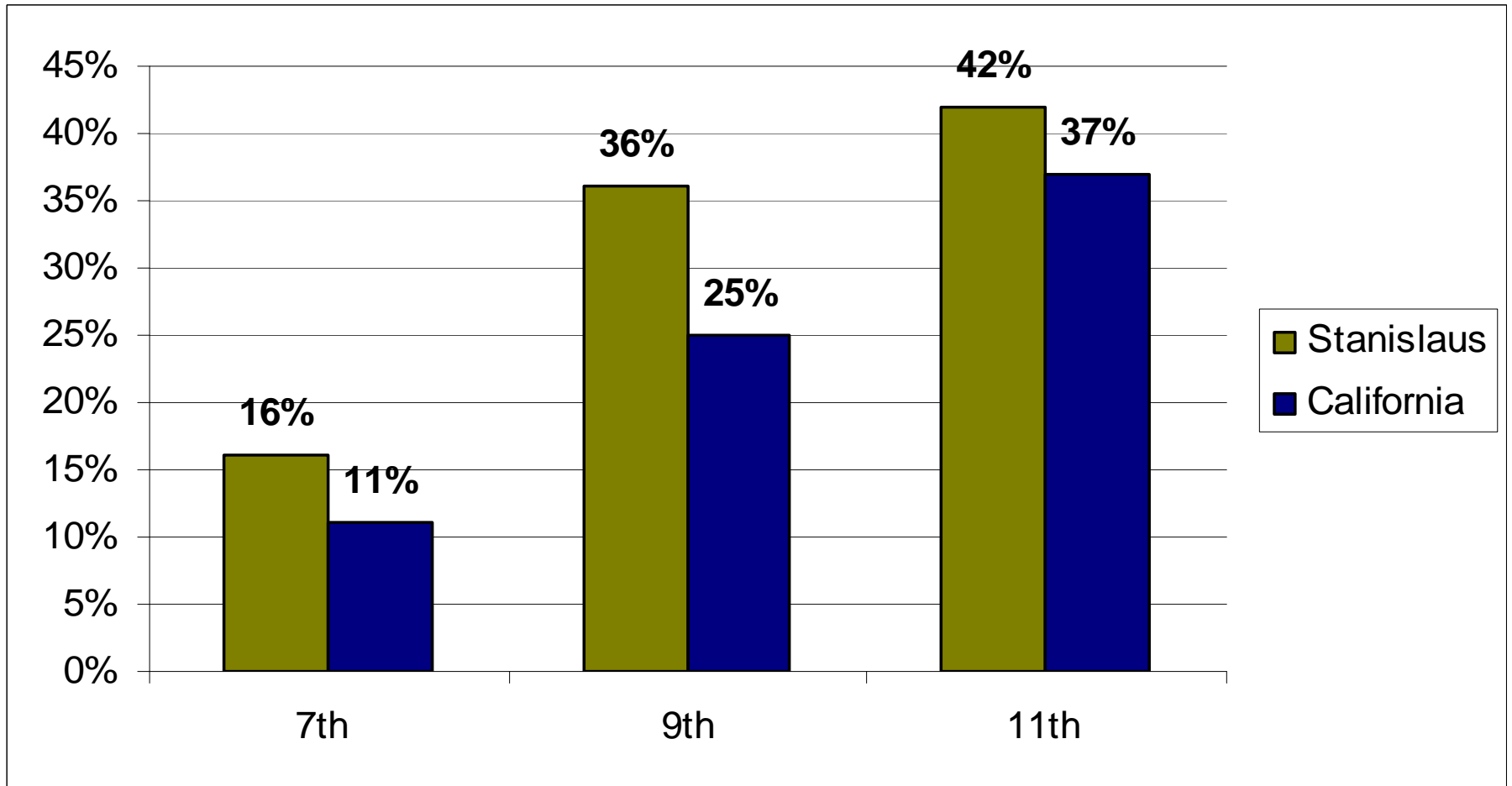


Source: California Healthy Kids Survey, 2005

Grade 5 (n) 3646; Grade 7 (n) 4284; Grade 9 (n) 2986; Grade 11 (n) 2569

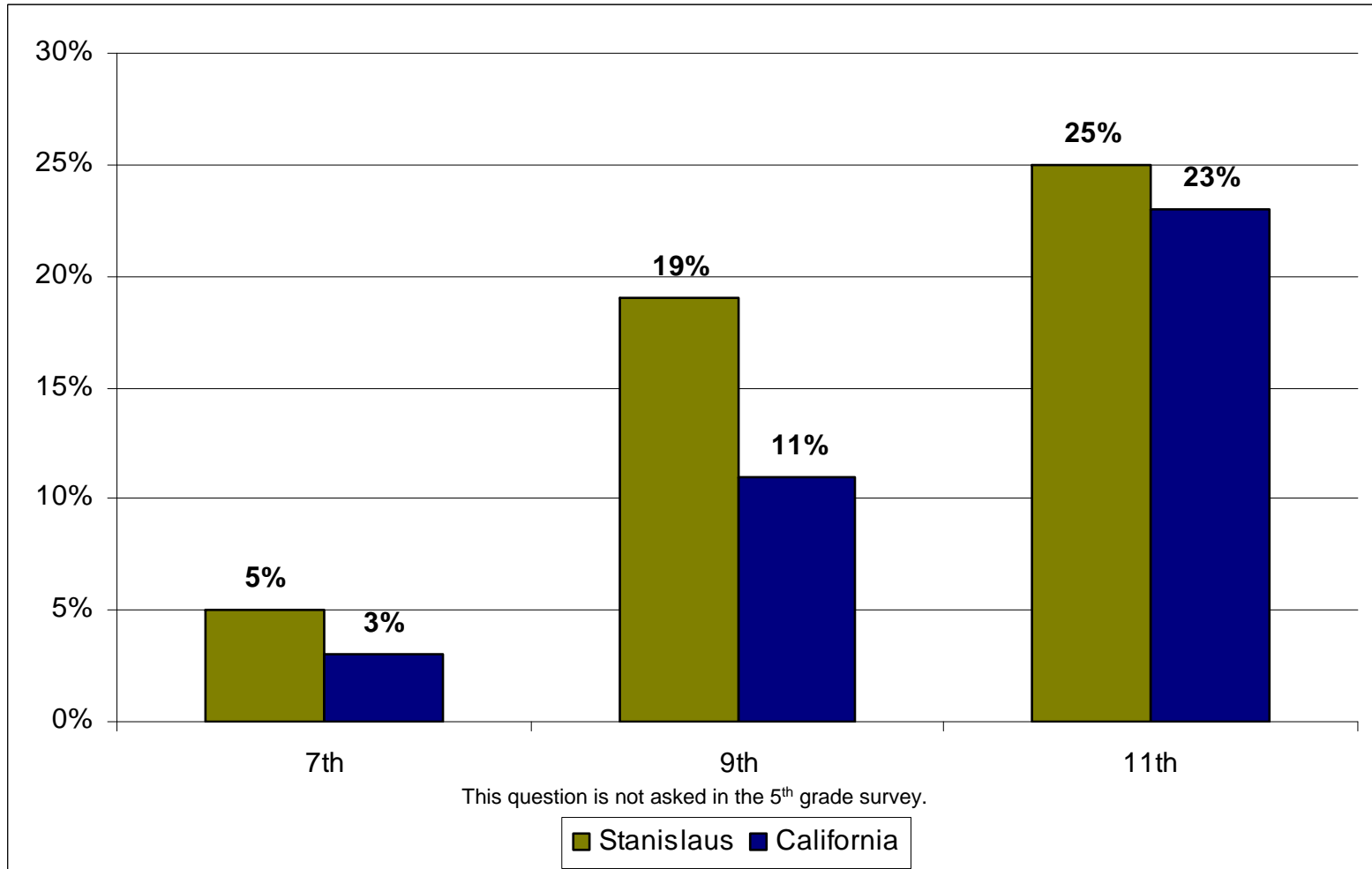
# Too Many Youth Are Drinking Alcohol

*Percent of Students That Used Alcohol in the Last 30-Days*



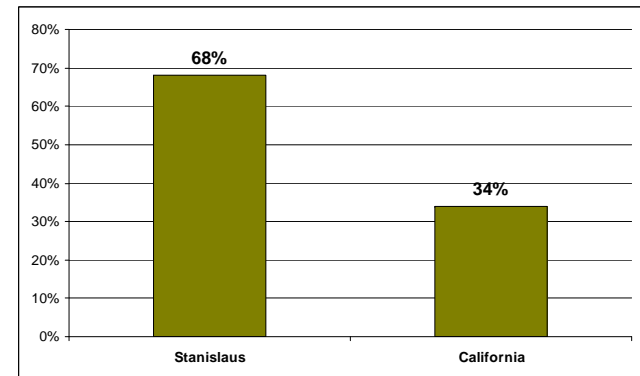
# Too Many Youth Are Drinking Alcohol

*During the Past 30 Days, Did Your Drink 5 or More Drinks in a Couple of Hours?*



# Too Many People Are Using Methamphetamine

- **Alcohol and substance abuse is the number one health concern within Stanislaus County.**  
*Health Assessment of Stanislaus County April 2005 (n=2,713)*
- **From 2004-2006, 70% of 4,075 BHRS Alcohol and Other Drug clients reported methamphetamine as their primary drug of choice.** *Alcohol and Drug Treatment 2004-2005 Client Data Survey*
- **In Stanislaus County from Oct. 1, 2005, to Sept. 30, 2006, deputy coroners picked up the bodies of 30 people who died of methamphetamine toxicity, or an overdose. There were 89 drug overdose deaths in the county in the past year, and methamphetamine was present in 34 percent of those cases.** *Modesto Bee*



In the 2006 BHRS Community Opinion Survey, 79% of 205 respondents felt drug use by adults and youth is a problem, 69% were concerned with methamphetamine.

In an Key Informant Interview, Sheriff Christianson reports that methamphetamine abuse/use drives the majority of burglary and auto theft crime in the County. In 2005 Modesto ranked #1 in the top 10 U.S. metropolitan areas for vehicle theft.



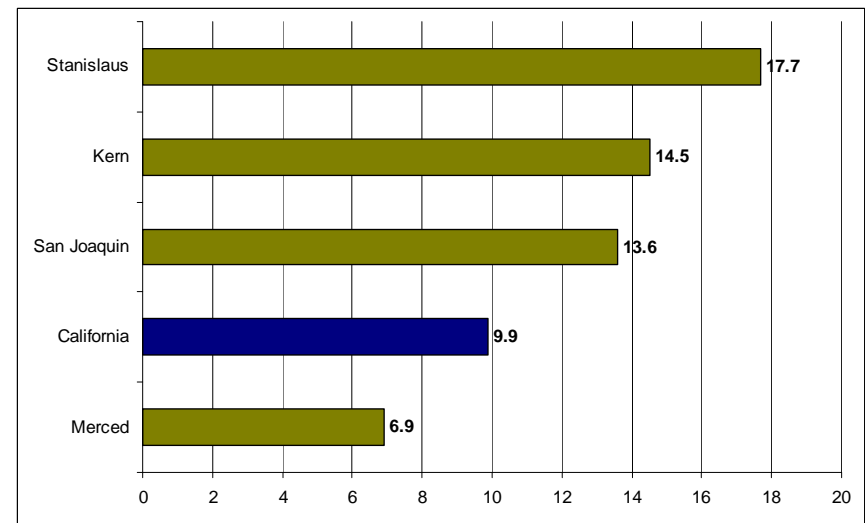
# Too Many Drug-Related Deaths

**Stanislaus County is ranked 7<sup>th</sup> highest in drug-related deaths (17.7 in Stanislaus County compared to 10.1 statewide)**

**In Stanislaus County from Oct. 1, 2005, to Sept. 30, 2006, deputy coroners picked up the bodies of 30 people who died of methamphetamine toxicity, or an overdose.**

**There were 89 drug overdose deaths in the county in the past year, and methamphetamine was present in 34 percent of those cases**

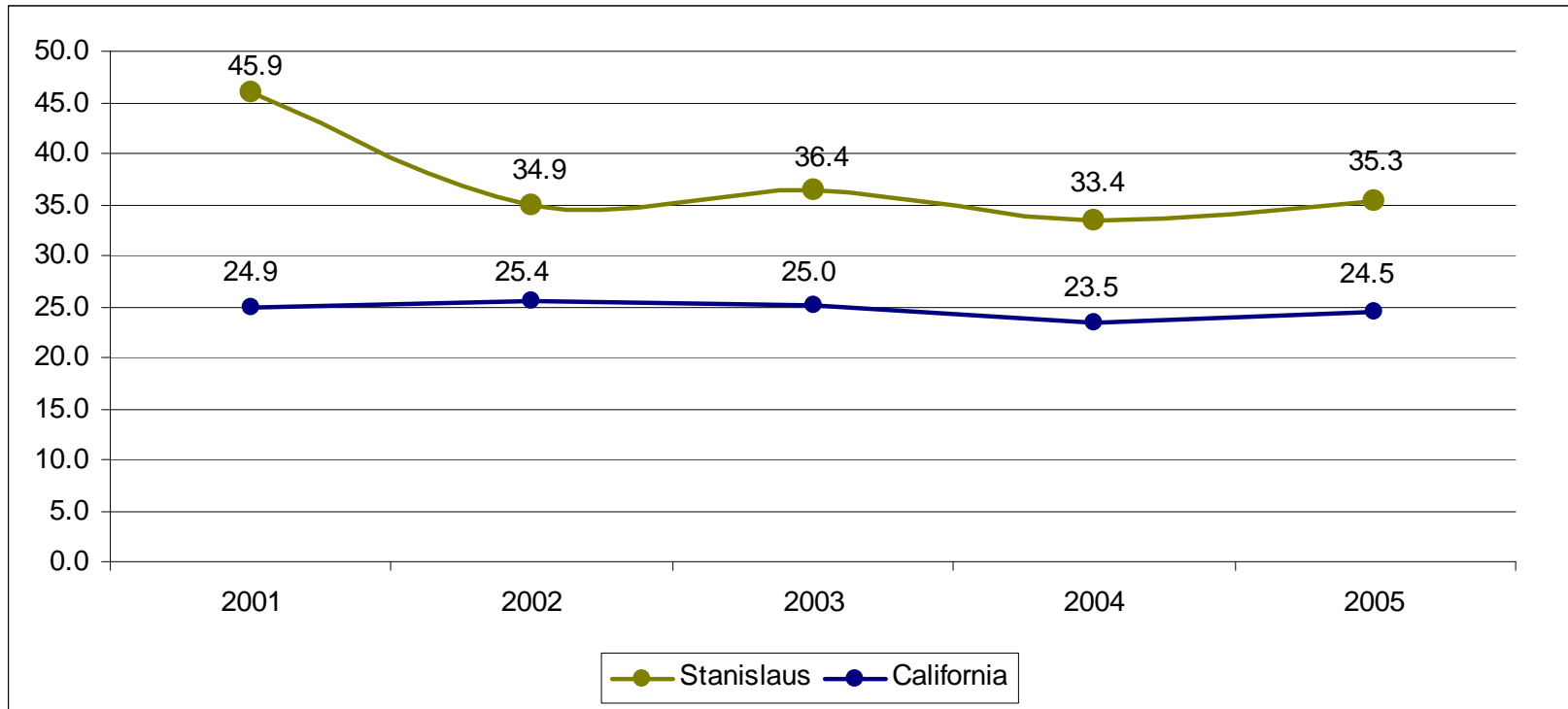
2000-2004 Death Rates



Source: County Health Status Profiles, 2002-2004

# Too Many People are Driving Under the Influence

## Adult DUI Felony Arrest Rate, 1996-2005

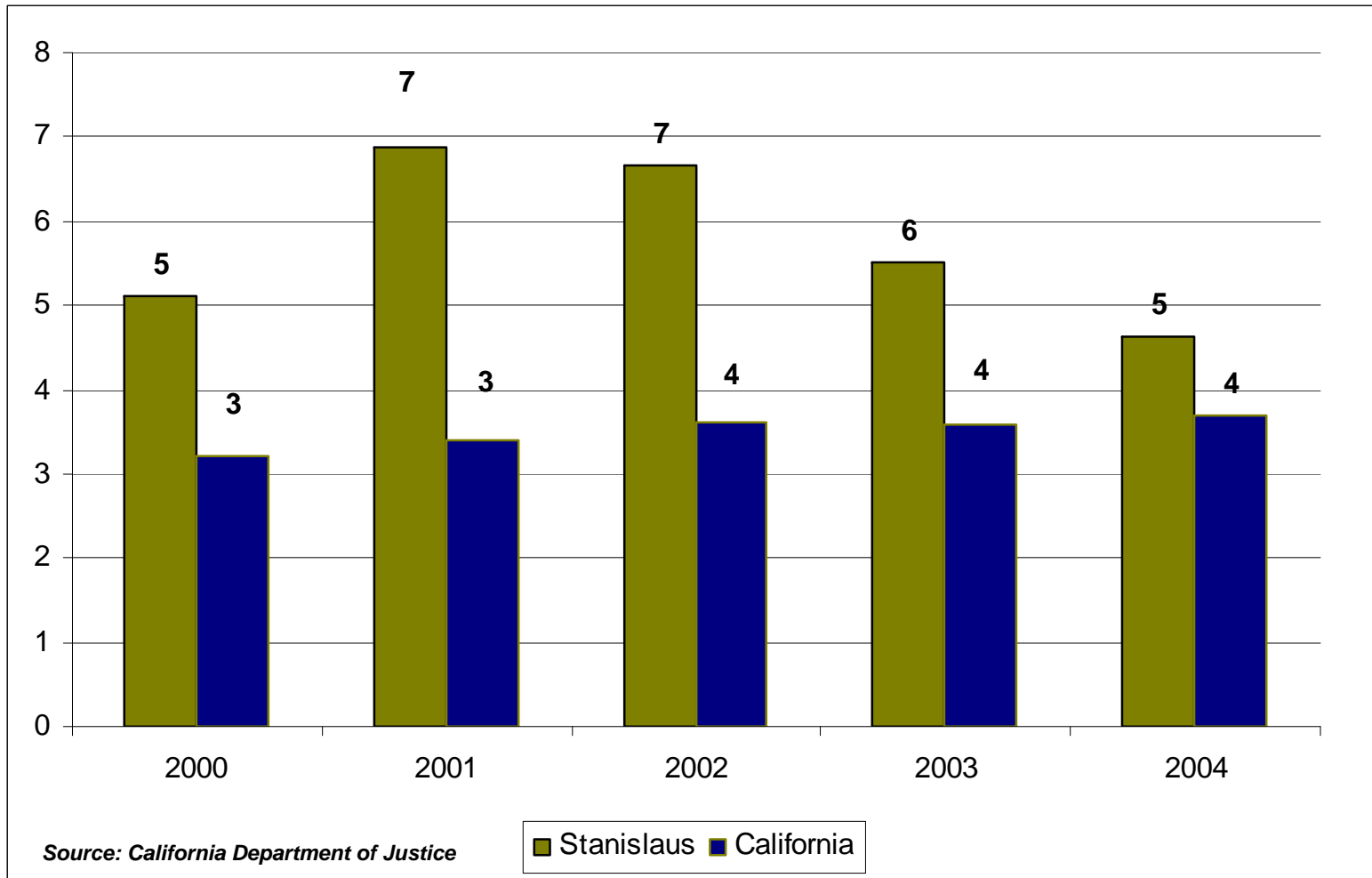


Source: California Department of Justice

# Too Many People are Driving Under the Influence

## Alcohol Involved Fatal Collisions, 2000-2004

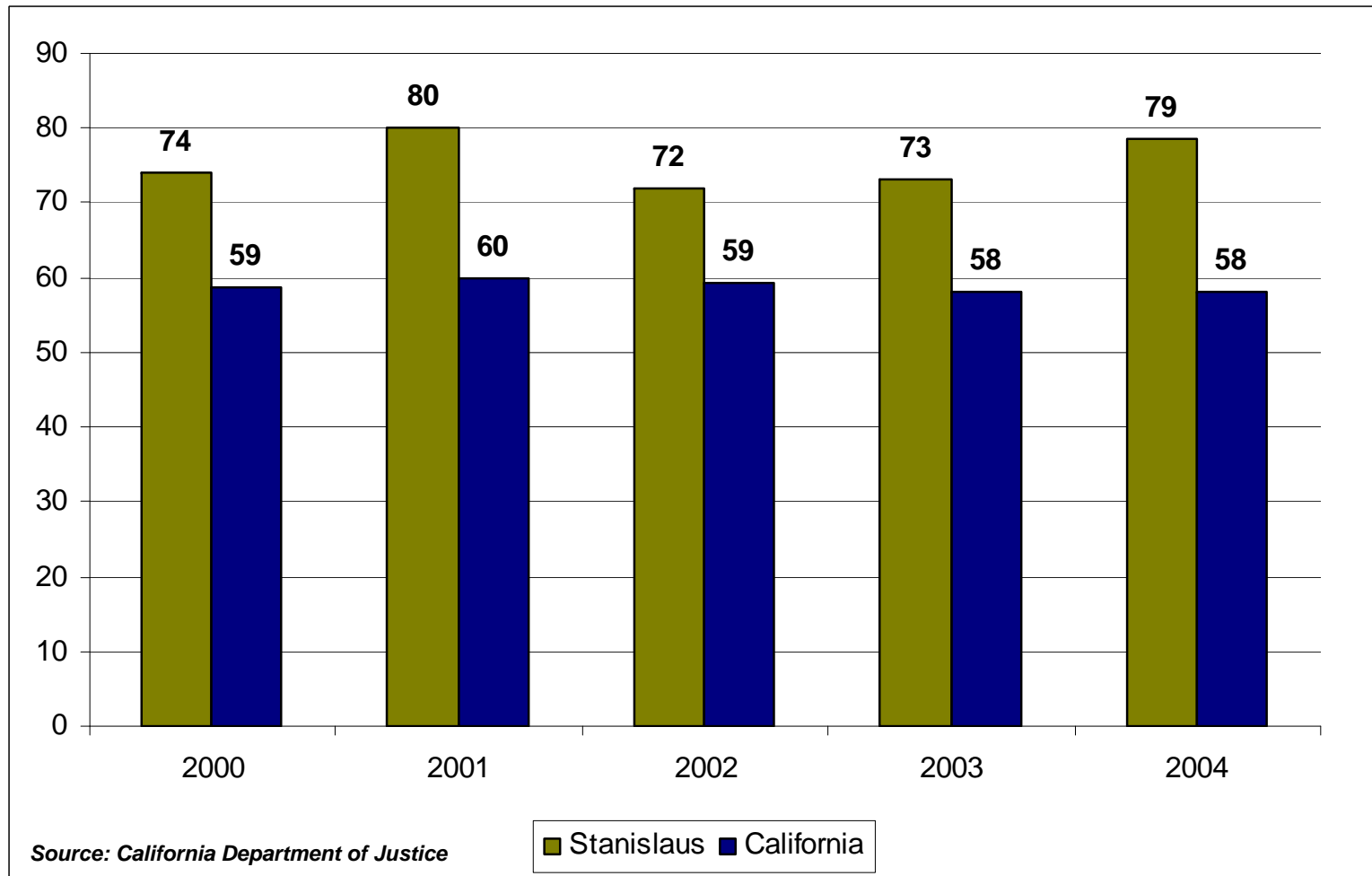
Per 100,000 Population Estimates



# Too Many People are Driving Under the Influence

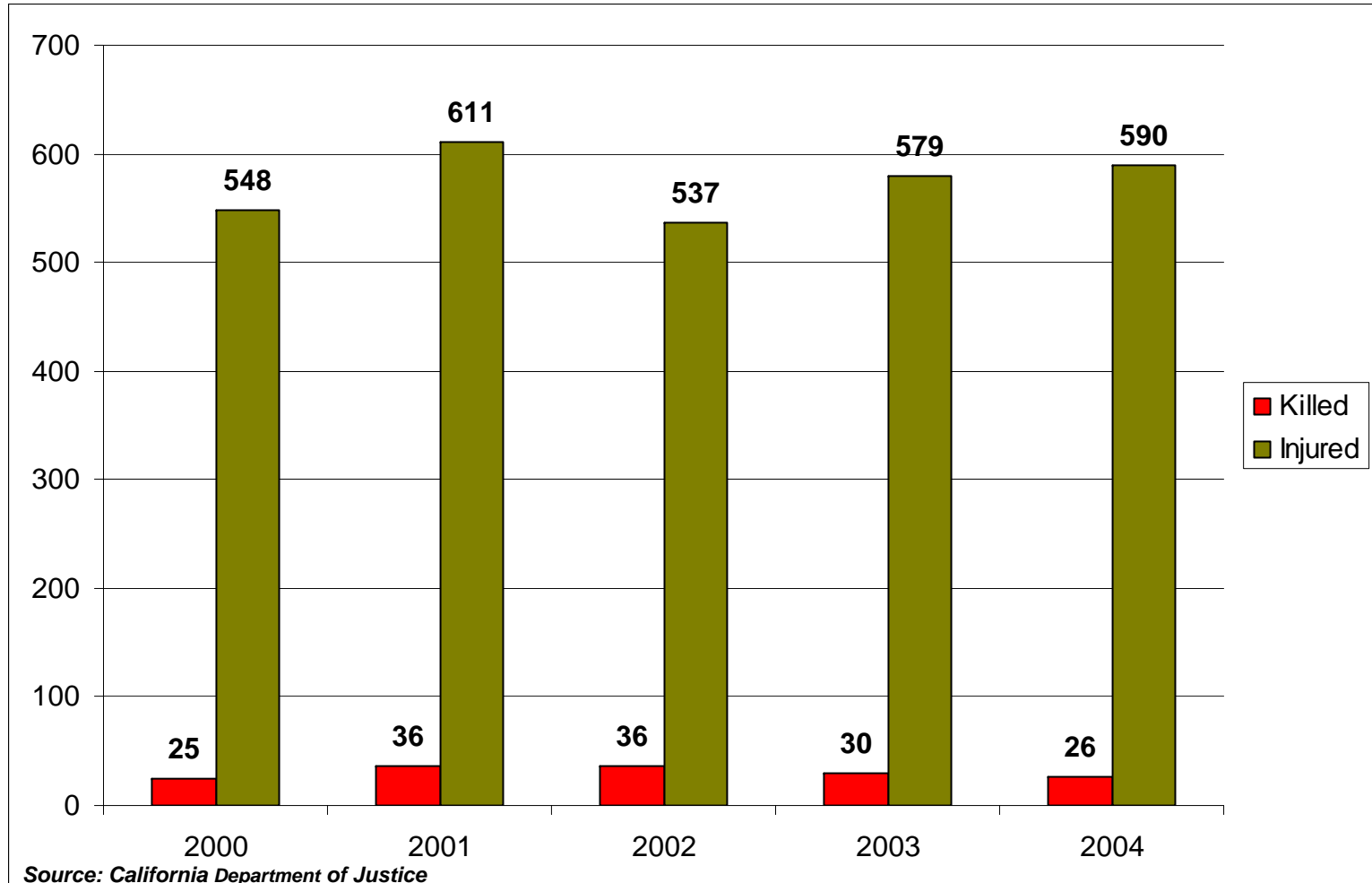
## Alcohol Involved Injury Collisions Rate, 2000-2004

Per 100,000 Population Estimates



# Too Many People are Driving Under the Influence

People Killed/Injured in DUI Related Collisions, 2000-2004



## **Too little is known about older adult (60 years +) substance use and abuse in Stanislaus County**

National research suggests that an estimated one in five older Americans (19%) may be affected by combined difficulties with alcohol and medication misuse.

According to the BHRS Community Opinion Survey, only 26% of the 205 respondents agreed that substance abuse was a problem for senior citizens, 43% had no opinion on the issue.

From 2004-2006, Older adults account for 0.64% of BHRS AOD clients served in 2005 (n=4, 075 )

For More Information

Behavioral Health & Recovery Services

Education and Prevention Services

Ruben Imperial

(209) 681-6916